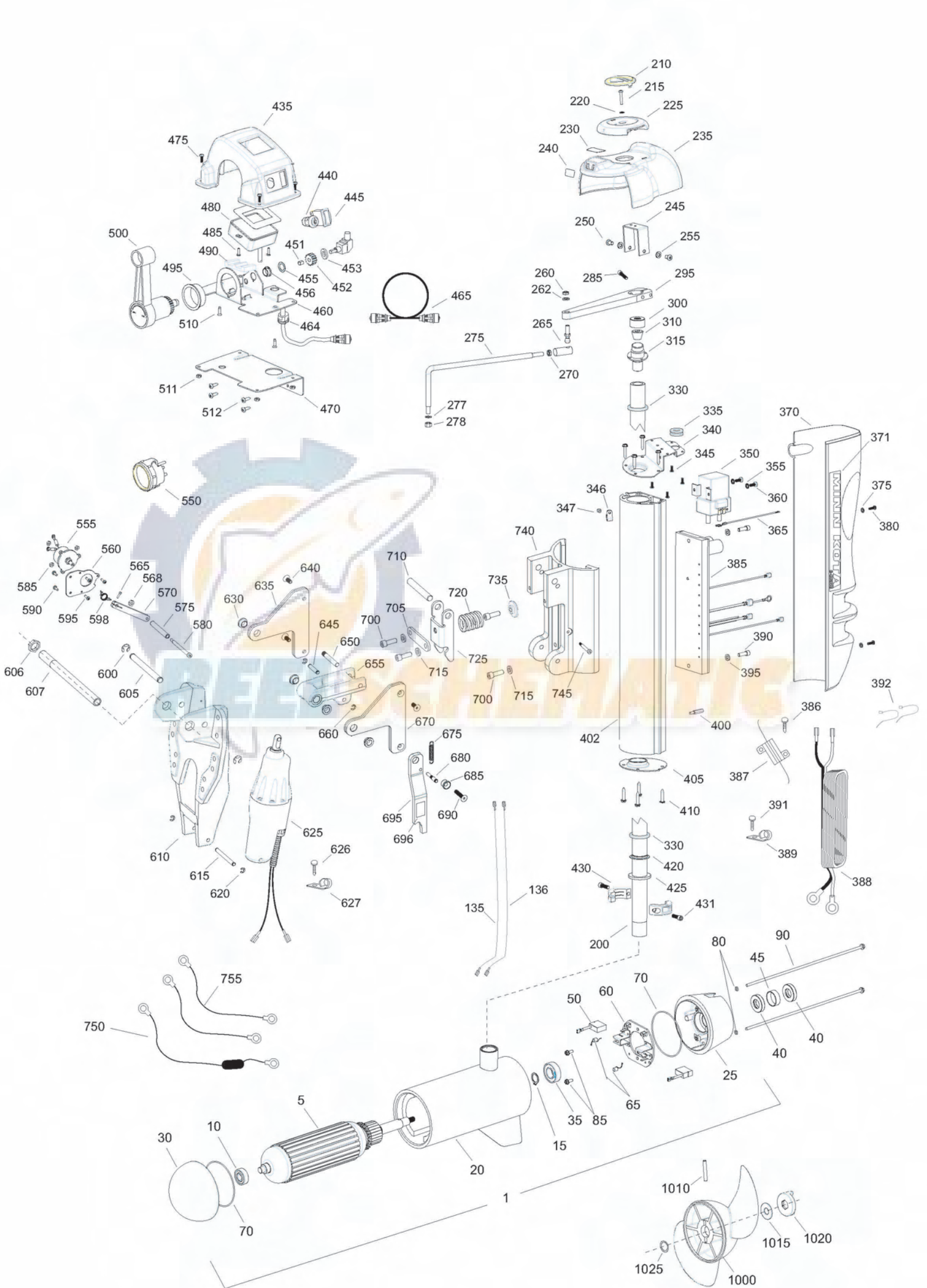


**E-Drive**  
**Remote Steer**  
**48-volt 40 amps**

for use with "L" serial numbers  
2-year warranty



| Item | P/N       | Description                     | Qty | Item | P/N     | Description                        | Qty | Item | P/N     | Description                   | Qty | Item | P/N     | Description                     | Qty |
|------|-----------|---------------------------------|-----|------|---------|------------------------------------|-----|------|---------|-------------------------------|-----|------|---------|---------------------------------|-----|
| 1    | 2357000   | Motor Assembly                  | 1   | 355  | 2261718 | Washer, lock - #10                 | 2   | 570  | 2044221 | Tilt sender arm               | 1   |      |         |                                 |     |
| 5    | 2-100-210 | Armature assembly               | 1   | 360  | 2223454 | Screw, 10-32 x 1/2                 | 2   | 575  | 2042005 | Roller tube                   | 1   |      |         |                                 |     |
| 10   | 140-011   | Bearing, plain end              | 1   | 365  | 2040600 | Wire, connecting 10 ga red         | 1   | 580  | 2043500 | Shoulder bolt                 | 1   | ■    | 2994882 | Mounting bag kit (3/8 hardware) | 1   |
| 15   | 788-075   | Retaining ring                  | 1   | 370  | 2050220 | Shield, extrusion, vantage         | 2   | 585  | 2043112 | Nut, #6                       | 3   |      |         |                                 |     |
| 20   | 2-200-220 | Center housing assembly         | 1   | 371  | 2045611 | Decal, shield, E-drive             | 1   | 590  | 2053415 | Screw #8                      | 2   |      |         |                                 |     |
| 25   | 2-300-210 | Brush end housing assembly      | 1   | 375  | 2371715 | Lockwasher, #8                     | 2   | 595  | 2043400 | Screw #6                      | 3   |      |         |                                 |     |
| 30   | 421-310   | Plain end housing assembly      | 1   | 380  | 2332101 | Screw, 8-32 x 1/2                  | 2   | 598  | 2042711 | Torsion spring                | 1   |      |         |                                 |     |
| 35   | 140-013   | Bearing, brush end              | 1   | 385  | 2044009 | Control Board, E-drive             | 1   | 600  | 2043000 | E-ring, .500                  | 2   |      |         |                                 |     |
| ■    | 2884460   | Seal & Oring Kit (40, 70, & 80) |     | 386  | 2043418 | Screw, 4-40 x 3/8                  | 2   | 605  | 2042614 | Pin, pivot, upper             | 1   |      |         |                                 |     |
| 40   | 880-027   | Seal                            | 2   | 387  | 2994071 | Resistor, E-drive                  | 1   | 606  | 9950825 | Nut, steering, hex            | 1   |      |         |                                 |     |
| 45   | 725-097   | Paper tube                      | 1   | 388  | 2040605 | Leadwire, prime power              | 1   | 607  | 2042000 | steering tube                 | 1   |      |         |                                 |     |
| 50   | 188-096   | Brush                           | 2   | 389  | 2263201 | Cable clamp, 9/16                  | 1   | 610  | 2041981 | Bracket, machined             | 1   |      |         |                                 |     |
| 60   | 2-600-210 | Brush plate assembly            | 1   | 390  | 9954533 | Screw, 1/4-20 x 3/4 SHCS           | 2   | 615  | 2042612 | Pin, lower, actuator          | 1   |      |         |                                 |     |
| 65   | 975-041   | Brush spring                    | 2   | 391  | 2053415 | Screw, 8-32 x 3/8                  | 1   | 620  | 2263006 | E-ring 5/16                   | 4   |      |         |                                 |     |
| 70   | 701-044   | O-ring, motor                   | 2   | 392  | 9950433 | Tie wrap                           | 4   | 625  | 2992804 | Actuator assy w/ terminals    | 1   |      |         |                                 |     |
| 80   | 701-009   | O-ring, thru-bolt               | 2   | 395  | 9950357 | Lockwasher, 1/4                    | 2   | 626  | 2053415 | Screw, 8-32 x 3/8             | 2   |      |         |                                 |     |
| 85   | 2053410   | Screw, 8-32                     | 2   | 400  | 2042911 | Stand-off                          | 1   | 627  | 2040721 | Clamp, cable 3/8              | 2   |      |         |                                 |     |
| 90   | 830-096   | Thru-bolt                       | 2   | 402  | 2046510 | Extrusion, main, E-drive           | 1   | 630  | 2047302 | Bearing, flange               | 4   |      |         |                                 |     |
| 135  | 640-030   | Leadwire, black                 | 1   | 405  | 2040200 | Cap-bottom, E-drive                | 1   | 635  | 2770801 | Link, upper, right side       | 1   |      |         |                                 |     |
| 136  | 640-130   | Leadwire, red                   | 1   | 410  | 2053413 | Screw 10-16 x 1 type AB            | 8   | 640  | 2043420 | Screw, 5/16-18 x 3/4          | 3   |      |         |                                 |     |
| 200  | 2042011   | Tube, Motor                     | 1   | 420  | 2266115 | Bearing cone                       | 1   | 645  | 2042610 | Pin, upper, actuator          | 1   |      |         |                                 |     |
| 210  | 2056700   | Pointer                         | 1   | 425  | 2041700 | Washer 1 3/16 x 1 3/4              | 1   | 650  | 2042618 | Pin, latch, breakaway         | 1   |      |         |                                 |     |
| 215  | 2263447   | Screw, #8                       | 1   | 430  | 2261622 | Collar half, alum                  | 2   | ■    | 2774305 | Arm assy [655, 630(2)]        | 1   |      |         |                                 |     |
| 220  | 2371715   | Lockwasher, #8                  | 1   | 431  | 2263453 | Screw, 1/4-20 x 1 SHCS             | 2   | 655  | 2044301 | Arm- actuator, machined       | 1   |      |         |                                 |     |
| 225  | 2050110   | Pointer knob                    | 1   | ■    | 2770217 | Throttle assembly [435-512]        | 1   | 660  | 2263006 | E-ring, 5/16                  | 4   |      |         |                                 |     |
| 230  | 2045600   | Decal, top                      | 1   | 435  | 2040215 | Throttle cover                     | 1   | 670  | 2770802 | Link, upper, left side        | 1   |      |         |                                 |     |
| 235  | 2050211   | Shroud                          | 1   | 440  | 2044025 | Switch, key                        | 1   | 675  | 2042722 | Spring, extension             | 1   |      |         |                                 |     |
| 240  | 2045610   | Decal, side                     | 1   | 445  | 2044020 | Switch, tilt                       | 1   | 680  | 2042624 | Pin, stabilizer               | 1   |      |         |                                 |     |
| 245  | 2041910   | Bracket, indicator              | 1   | 451  | 2042705 | Spring knob                        | 1   | 685  | 2047320 | Bushing, tilt arm             | 1   |      |         |                                 |     |
| 250  | 2043416   | Screw, 1/4-28 BHCS              | 2   | 452  | 2042200 | Gear, potentiometer                | 1   | 690  | 2043428 | Screw, 5/16-18 x 1 1/2        | 1   |      |         |                                 |     |
| 255  | 9950357   | Lockwasher, 1/4                 | 2   | 455  | 2043110 | Nut, speed                         | 1   | 695  | 2774309 | Arm, stabilizer [695-696]     | 1   |      |         |                                 |     |
| ■    | 2774211   | Drag link assy                  | 1   | 456  | 2047315 | Bearing, nyliner                   | 1   | 696  | 2045630 | Warning Decal                 | 1   |      |         |                                 |     |
| 260  | 2383104   | Nut, 3/8-24 nylock              | 1   | 460  | 2041915 | Base, throttle                     | 1   | 700  | 9954533 | Screw, 1/4-20 x 3/4 SHCS      | 4   |      |         |                                 |     |
| 262  | 9909003   | Lockwasher, 3/8                 | 1   | 464  | 2042900 | Strain relief                      | 1   | 705  | 2041940 | Plate, latch, breakaway       | 1   |      |         |                                 |     |
| 265  | 2383515   | Quick disconnect                | 1   | 465  | 2047412 | Cable, throttle                    | 1   | 710  | 2042616 | Pin, upper, breakaway         | 1   |      |         |                                 |     |
| 270  | 2263105   | Nut, 3/8-24                     | 1   | 470  | 2041930 | Bracket, mounting                  | 1   | 715  | 9950357 | Lockwasher 1/4                | 4   |      |         |                                 |     |
| 275  | 2044211   | Drag link                       | 1   | 475  | 2332101 | Screw, #8-32                       | 4   | 720  | 2042715 | Spring, breakaway             | 1   |      |         |                                 |     |
| 277  | 990-067   | Washer, thrust                  | 1   | 480  | 2044014 | LCD/Cable assy [465]               | 1   | 725  | 2047200 | Latch, breakaway              | 1   |      |         |                                 |     |
| 278  | 2263105   | Nut, 3/8-24                     | 1   | 485  | 2302100 | Screw, #6                          | 2   | 735  | 2041500 | Shim washer, breakaway        | 1   |      |         |                                 |     |
| 285  | 2263453   | Bolt 1/4-20 x 1                 | 1   | 490  | 2042701 | Spring, handle                     | 1   | 740  | 2041810 | Extrusion, breakaway          | 1   |      |         |                                 |     |
| 295  | 2044200   | Arm, steering                   | 1   | 500  | 2880900 | Throttle handle w/ decal           | 1   | 745  | 2043504 | Bolt, shoulder 1/4-20 x 1 1/4 | 1   |      |         |                                 |     |
| 300  | 9950339   | Cap, motor fitting              | 1   | 510  | 2043408 | Screw, #8                          | 2   | 750  | 2998200 | Circuit breaker assy          | 1   |      |         |                                 |     |
| 310  | 2382900   | Grommet, split                  | 1   | 511  | 2303112 | Nut, #8-32                         | 4   | 755  | 2340610 | connector cable               | 2   |      |         |                                 |     |
| 315  | 2046201   | Bearing race, main E-drive      | 1   | 512  | 2043412 | Screw, #8-18                       | 4   |      |         |                               |     |      |         |                                 |     |
| 325  | 2042620   | Pin, spring                     | 1   | 550  | 2044030 | Tilt gauge                         | 1   | ■    | 1378140 | Propeller kit                 | 1   |      |         |                                 |     |
| 330  | 2266000   | Beaing, steel ball              | 1   | ■    | 2778407 | Tilt send assy w/o gauge [555-598] | 1   | 1010 | 2352602 | Drive pin                     | 1   |      |         |                                 |     |
| 335  | 2042905   | Grommet                         | 1   | 555  | 2998405 | Potentiometer assy                 | 1   | 1015 | 2091701 | Washer, prop                  | 1   |      |         |                                 |     |
| 340  | 2040207   | Cap-top                         | 1   | 560  | 2041937 | Tilt bracket                       | 1   | 1020 | 2198401 | Nut, nylock, prop, Anode      | 1   |      |         |                                 |     |
| 345  | 2372100   | Screw, 8-18 x 5/8               | 5   | 565  | 2043402 | Screw, #4                          | 1   | 1025 | 2374611 | O-ring, prop                  | 1   |      |         |                                 |     |
| 350  | 2040700   | Contacto                        | 1   | 568  | 2013110 | Nut, #10-24                        | 1   |      |         |                               |     |      |         |                                 |     |

\* This item is part of an assembly. This item cannot be sold separately due to machining and /or assembly that is required.

P/N 2047102 REV. P ECN 31119 11-09

# 48 VOLT WIRING CÂBLAGE DE 48 V

